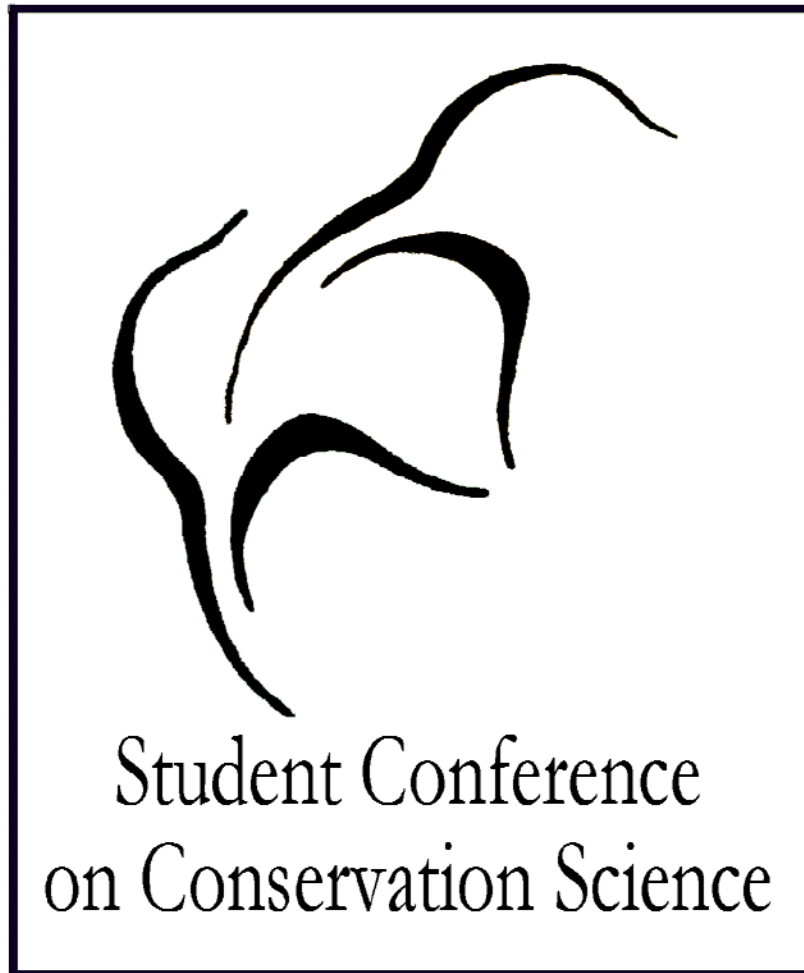


Conference Report



University of Cambridge
27 – 29 March 2007

Sponsored by: Center for Applied Biodiversity Science at Conservation International, Royal Society for the Protection of Birds, Institute of Zoology of the Zoological Society of London, Royal Botanic Gardens Kew, Tropical Biology Association, British Ecological Society, Science, Blackwell Publishing, University of Cambridge



Student Conference on Conservation Science

Report on the Eighth Conference, 27 - 29 March 2007

Andrew Balmford, Rhys Green, Rosie Trevelyan, Renuka Badhe & Stephanie Prior

The Conference was held in the Department of Zoology, University of Cambridge and was attended by over 250 people including 170 postgraduate students working in conservation science. Student delegates attended from the following 62 countries:

Australia, Austria, Bangladesh, Belgium, Bolivia, Brazil, Bulgaria*, Cambodia*, Cameroon, Canada, Chile, China, Colombia, Cyprus, Democratic Republic of Congo, Denmark, Ecuador, Eritrea*, Finland, France, Germany, Ghana, Greece, Guyana*, Hungary, India, Indonesia, Ireland, Italy, Japan*, Kazakhstan, Kenya, Korea, Madagascar, Mauritius, Mexico, Mongolia, Mozambique*, Namibia, Nepal, Netherlands, Paraguay*, Peru*, Philippines, Portugal, Romania*, Rwanda*, Slovakia, South Africa, Spain, Sri Lanka, Sudan, Sweden, Switzerland, Tanzania, Turkey, Uganda, United Kingdom, USA, Venezuela, Zambia*, Zimbabwe.

The twelve countries marked with asterisks were represented by student delegates for the first time in 2007. Over the entire conference series, a total of 92 countries have now been represented by student delegates.

The conference included 33 talks and 70 posters by research students and four plenary lectures by distinguished senior scientists and conservation practitioners. The conference was opened by Professor Ian Leslie, Pro-Vice-Chancellor (Research), University of Cambridge. The plenary lectures were given by Professor Norman Myers (Green College, University of Oxford), Dr David Cooper (Secretariat of the Convention on Biological Diversity), Professor Hugh Possingham (University of Queensland) and Professor Lu Zhi (Conservation International, China). The full programme is given later.

A special feature of the conference is the role played by conservation practitioners. Overall, the conference was visited by 76 staff or representatives from 34 conservation agencies, institutes and NGOs. There was a poster session *Who's who in conservation?* at which many conservation agencies, institutes and NGOs displayed posters and provided staff to describe their

work and answer queries. The following organisations contributed to the conference in this and other ways:

American Association for the Advancement of Science, A Rocha (Christians in Conservation), ARCOS, ARKive, British Antarctic Survey, Birdlife International, Birdlife Zimbabwe, BP Conservation Programme, British and Irish Association of Zoos and Aquariums, British Ecological Society, British Trust for Ornithology, Cambridge Conservation Forum, Centre for Ecology and Hydrology, Center for Applied Biodiversity Science at Conservation International, Conservation International- China, Convention on Biological Diversity, Coral Cay Conservation, Fauna and Flora International, Institute of Zoology, IUCN, Natural England, ORTPN Rwanda, RARE, Royal Botanic Gardens Kew, Royal Society for the Protection of Birds, Sociedad Formigas, Tropical Biology Association, TRAFFIC, UNEP-WCMC, World Bank, World Land Trust, WWF-UK, WWF-US, Zoological Society of London.

Scientists from various departments of the University of Cambridge and the universities of Aberystwyth, Anglia Ruskin, Bangor, East Anglia, Imperial College, Kent, Makerere, Oxford, Peking and Queensland also participated in the conference.

We continued to develop the two Conference workshop sessions and offered nine 90-minute workshops, six of which were held twice. We invited experts on some of the practical skills important to graduate students to present workshops with a “how to...” focus. The workshops are listed in Table 1.

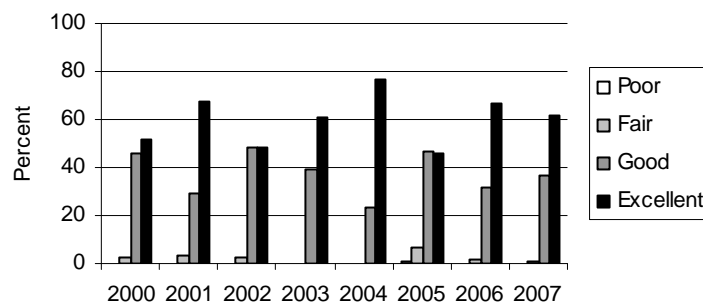
Table 1. Workshops presented at the eighth Student Conference on Conservation Science

Workshop title	Leader	Affiliation
Practical conservation genetics	Bill Amos	Department of Zoology, University of Cambridge
How to deal with the press	David Aldridge	Department of Zoology, University of Cambridge
How to write a scientific paper	Martin Fisher	Fauna & Flora International & Editor of Oryx
How to write grant and project proposals	Rosie Trevelyan	Tropical Biology Association
Stakeholder dialogue: making it real	John Hopkins	Natural England
Social Science Tools for Conservation: What are permits, payments and public goods?	Brendan Fisher	University of East Anglia
Planning a conservation research programme	William J. Sutherland	Department of Zoology, University of Cambridge
An introduction to systematic conservation planning	Bob Smith	Durrell Institute of Conservation and Ecology, University of Kent, Canterbury
How to deal with multinational corporations	Timothy J. Killeen &	Center for Applied Biodiversity Science- Conservation International
investing in a third world countries	Assheton Carter	Center for Environmental Leadership in Business

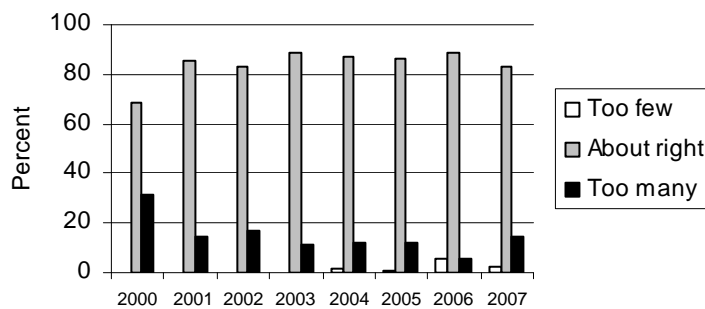
Analysis of feedback from student delegates

We received 95 feedback forms, though some people did not answer every question. In this analysis, we compare the results with those for 2000 (83 responses), 2001 (62), 2002 (72), 2003 (71), 2004 (76), 2005 (91) and 2006 (106). Results are shown for all years except where a new question was asked or an event was not held in all years.

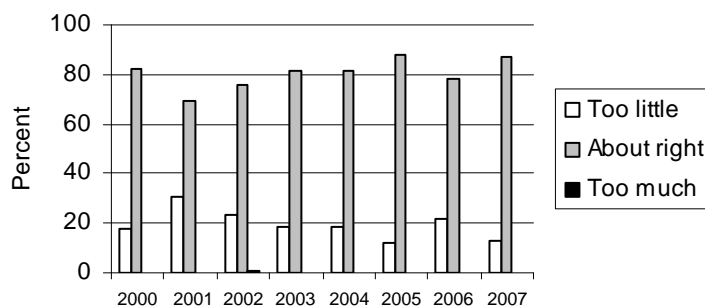
How did you rate the conference overall?



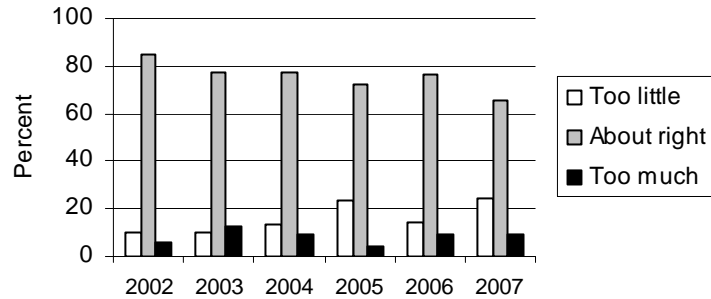
Did we have the right number of student talks?



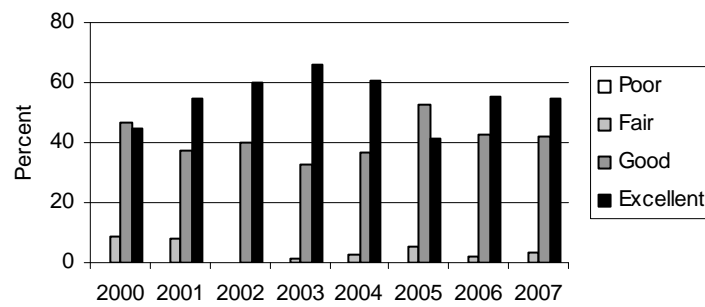
Did we have enough time to discuss student talks?



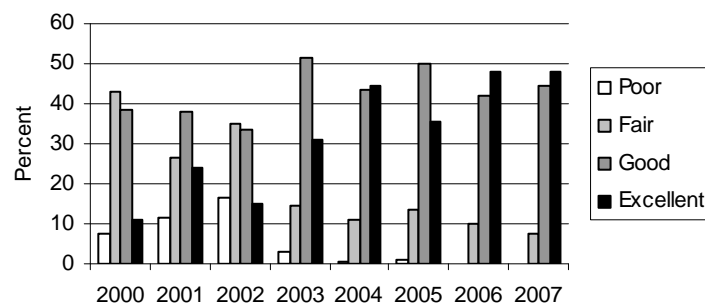
Did we have enough time to view student posters?



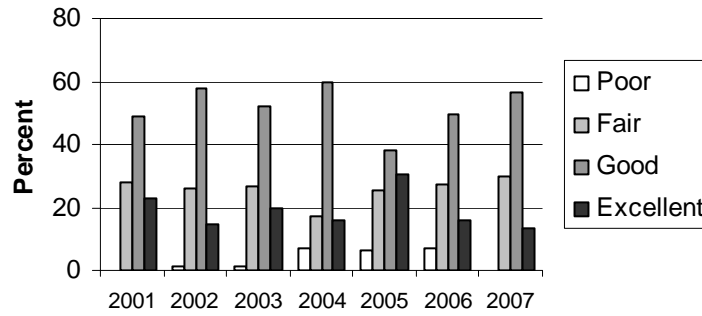
How did you rate the plenary talks?



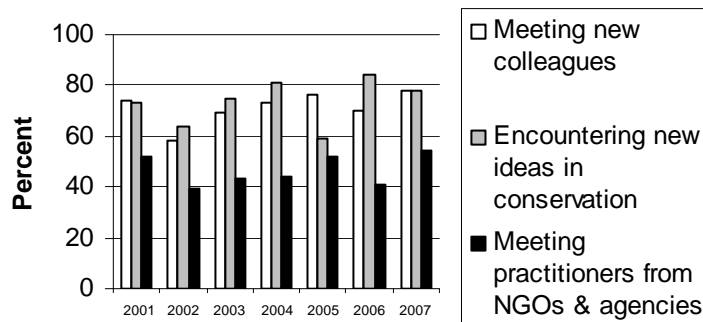
How did you rate the workshops?



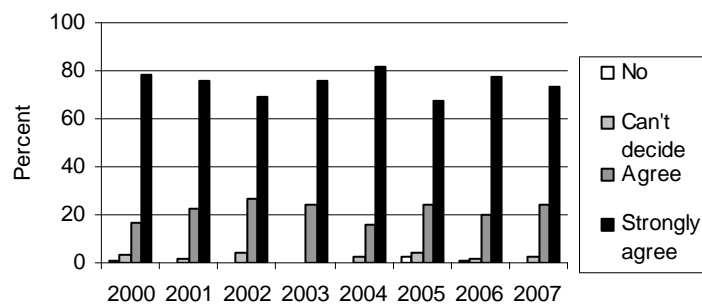
How did you rate *Who's who in Conservation?*



What did you find useful about the Conference?



Should a similar conference be held next year?



The feedback charts show that the great majority of delegates rated the conference as good or excellent and fluctuations in the ratings over time are rather small for most questions (Table 2). The rating given to the workshops was the highest ever.

Table 2. Comparison of ratings of the Conference by delegates in 2000 - 2007. Responses were scored from zero (e.g. "Poor" or "No") to 3 (e.g. "Excellent" or "Strongly agree"). The total for all respondents was calculated and expressed as a percentage of the maximum total if all respondents had expressed their approval at the highest possible level. The table shows these percentages for all years, except for events that were not held in all years or questions not on the feedback form in all years.

	2000	2001	2002	2003	2004	2005	2006	2007
How did you rate the conference overall?	83	88	82	87	92	79	88	87
What did you think about the number of student talks?	68	85	83	89	87	87	89	83
Was adequate time allocated to discussing student talks?	82	69	76	81	81	88	78	87
Did you find the time allocated to student posters adequate?			86	77	77	72	76	66
How did you rate the plenary talks?	79	82	86	88	86	79	84	84
How did you rate the workshops?	51	58	49	70	77	73	79	80
How did you rate <i>Who's who in Conservation</i> ?		65	61	63	61	64	58	61
Would you like to see a conference run along similar lines next year?	91	91	88	92	93	86	91	90

Prizes

Members of the Conference Advisory Committee selected the best three talks and the best three posters. The prizes consisted of journal subscriptions donated by the Society for Conservation Biology and Elsevier. Prizewinners are listed in Table 3.

Table 3. Prize winners for student talks and posters at SCCS 2007.

Category	Winner	Subject
Best talk	Donna Harris	Introduced black rats and Galápagos rice rats
Second best talk	Sanjay Gubbi	ICDPs and tiger habitats- a case study from India
Third best talk	Akane Minohara	Japanese attitudes towards ivory use and elephant conservation
Best poster	Clare Marsden	Ethiopian wolf in the Simien Mountains
Second best poster	Rebecca Hayhow	Spring arrival of black-tailed godwits
Third best poster	Lorenzo Alvarez-Filip	Hurricane impacts on coral reefs

Conference Bursaries and Grants and Miriam Rothschild Travel Bursaries

The travel and subsistence costs of eleven student delegates from China, Colombia, Ghana, India (3), Indonesia, Kenya, Namibia and Tanzania (2) were wholly covered by conference bursaries and two other delegates from Cameroon and the Philippines were assisted by grants. All the supported delegates presented talks at the Conference. In addition, thirteen conference delegates were supported by the Miriam Rothschild Travel Bursary Programme to attend the conference and also to spend about a month working on conservation-related projects with universities, non-governmental organisations and agencies in the UK.

Ninth Student Conference on Conservation Science

The next conference in the series will be held in the Department of Zoology, University of Cambridge, 25 – 27 March 2008. The plenary speakers will be Richard Cowling (South Africa), Jon Paul Rodríguez (Venezuela), Carl Safina (USA) and Jeremy Thomas (UK). Updates on the programme will be posted on the conference website <http://www.sccs-cam.org/>.

Sponsors

The Conference and bursary scheme was sponsored by the Center for Applied Biodiversity Science at Conservation International, the Royal Society for the Protection of Birds, Science, Blackwell Publishing, the Royal Botanic Gardens Kew, the British Ecological Society, Institute of Zoology (Zoological Society of London), Tropical Biology Association and the University of Cambridge.

The Society for Conservation Biology, and Elsevier provided the prizes for student talks and posters.

Acknowledgements

We are very grateful to the Conference Advisory Committee for their hard work. Current members are Bill Adams (Department of Geography, University of Cambridge), Guy Cowlshaw (Institute of Zoology, Zoological Society of London), Lincoln Fishpool (BirdLife International), Shahina Ghazanfar (Royal Botanic Gardens, Kew), Nigel Leader-Williams (Durrell Institute of Conservation and Ecology, University of Kent), and Bill Sutherland (Department of Zoology, University of Cambridge). Committee members undertook many tasks including selecting student talks, organising

workshops, deciding on the prize-winning talks and posters and advising on plenary speakers.

We thank our plenary speakers David Cooper, Norman Myers, Hugh Possingham and Lu Zhi.

We thank the following people who chaired or introduced conference sessions: Pamela Abbott (Natural England), Steve Broad (TRAFFIC), Sarah Durant (Institute of Zoology), Simeon Hill (British Antarctic Survey), Francine Hughes (Anglia Ruskin University), Annette Lanjouw (IGCP/FFI), Sam Kanyamibwa (ARCOS), Dan Omolo (BirdLife International), Mike Rands (Birdlife International), Mark Wright (WWF-UK).

We are grateful to the workshop organisers, Bill Amos (Department of Zoology, University of Cambridge), David Aldridge (Department of Zoology, University of Cambridge), Assheton Carter (Center for Environmental Leadership in Business, Conservation International), Brendan Fisher (University of East Anglia), Martin Fisher (Fauna & Flora International & Editor of *Oryx*), John Hopkins (Natural England), Bob Smith (Durrell Institute of Conservation and Ecology, University of Kent), Tim Killeen (Center for Applied Biodiversity Science, Conservation International), Rosie Trevelyan (Tropical Biology Association), Bill Sutherland (Department of Zoology, University of Cambridge). We are grateful to Bill Sutherland and colleagues from the Conservation Science Group and Tropical Biology Association for holding a workshop to help student delegates prepare their talks.

Facilities at the Department of Zoology, University of Cambridge were made available by the Head of Department, Professor Malcolm Burrows and in the University Museum of Zoology by its Director, Professor Michael Akam. We are also grateful for the support of the following members of the department; Julian Jacobs, Sue Rolfe, Roger Northfield, Neal Maskell, Linda Blades, Keith Robertson.

The following people helped in many ways with the planning and organisation of the Conference and worked hard to make it a success:

Alison Johnston, Ana Rodrigues, Brigid Barry, Clive Nuttman, Gustavo Canales, Holly Barclay, Ian Craigie, Ira Cooke, Ben Garrod, Jamie Gundry, Jenny Harcourt, Lizzy Carroll, Lizzie Tyler, Monique Gulickx, Neil Burgess, Omaliss Keo, Sarah Blakeman, Shireen Green, Terri Young, Tiffany Bogich, Tony Whitten, Val Kapos, Clea Kapos.

Programme

Wednesday 28 March 2007

08.30 - 09.00	Registration (Elementary Lab)	
09.00 - 10.00	Plenary: Money matters: Conservation decisions that ignore economics are invariably very inefficient	
	Professor Hugh Possingham (University of Queensland, Australia)	
10.00 - 11.00	Student talks: Session 3	People and protected areas 1
		Chair: Dr Annette Lanjouw (IGCP/FFI)
	Private parks for conservation in Zambia: New trends or no trends?	D. Ngwenyama (Zambia)
	ICDPs and tiger habitats - a case study from India	S. Gubbi (India)
	Ecotourism and poverty alleviation in Ghana	Y. B. Agyeman (Ghana)
11.00 - 11.30	Coffee (and posters to be set up by contributors in Elementary Lab)	
11.30 - 12.50	Student talks: Session 4	Species ecology
		Chair: Dan Omolo (BirdLife International)
	Breeding success of the critically endangered sociable lapwing in Kazakhstan	M. Koshkin (Kazakhstan)
	Habitat requirements of Cameroon's grey-necked picathartes	T. Awa II (Cameroon)
	Den site selection by Norwegian wolverines	L. Gorini (Italy)
	Habitat preferences of freshwater pearl mussels	L. Tarr (UK)
12.50 - 14:45	Lunch and posters (Elementary Lab)	
14:45	Conference photograph (meet on lawn in front of the whale)	
15.00 - 16.00	Student talks: Session 5	People and protected areas 2
		Chair: Pamela Abbott (Natural England)
	Community attitudes towards conservation in Tanzania	C. Masao (Tanzania)
	Assessing and conserving biodiversity in Namibia's communal conservancies	G. Kamupingene (Namibia)
	Community participation in the conservation of Colombia's protected areas	E. Valenzuela (Colombia)
16.00 - 16.30	Tea (Elementary Lab)	
16.30 - 17.30	Student talks: Session 6	Drivers of change
		Chair: Dr Sarah Durant (IOZ)
	Drivers of land use change in the Maasai steppe of Tanzania	F. Msoffe (Tanzania)
	Understanding deforestation in western Madagascar	I. Scales (UK)
	Wildlife trends in the Greater Mara Ecosystem, Kenya	L. Richmond-Coggan (UK)
17.30 - 18.45	Posters with wine and food (Elementary Lab)	
18.45 - 20.15	Workshops: Session 2	
20.30 - 23.30	Party (St Catharine's College JCR)	

Thursday 29 March 2007

08.30 - 09.00	Registration (Elementary Lab)	
09.00 - 10.00	Plenary: China's role as an environmental leader Professor Lu Zhi (Conservation International, China)	
10.00 - 11.00	Student talks: Session 7	Threats to species Chair: Steve Broad (TRAFFIC International)
	Climate change and critically endangered riverine rabbits	K. Collins (South Africa)
	Changing rainfall patterns and Mauritius kestrels	G.D. Senapathi (India)
	Introduced black rats and Galápagos rice rats	D. Harris (UK)
11.00 - 11.30	Coffee (Elementary Lab)	
11.30 - 13.10	Student talks: Session 8	Disturbance and exploitation Chair: Dr Sam Kanyamibwa (ARCOS)
	How does human disturbance affect México's breeding seabirds?	Y. Albores-Barajas (México)
	The world's largest snake hunt: Socioeconomics and conservation in Cambodia	S. Brooks (UK)
	Correlates of wildlife snaring patterns in Tsavo West National Park, Kenya	Y. Wato (Kenya)
	Elephant conservation and Japanese attitudes towards ivory use	A. Minohara (Japan)
	Bushmeat and alternatives in urban markets in Equatorial Guinea	S. Allebone-Webb(UK)
13.10 - 14.20	Lunch and posters (Elementary Lab)	
14.20 - 15.20	Student talks: Session 9	Farming and biodiversity Chair: Dr Francine Hughes (ARU)
	Natural regeneration of Portugal's cork oak woodlands	A. Alves (Portugal)
	Birds and shade coffee plantations in the Western Ghats, India	Anand M.O. (India)
	Butterfly biodiversity and cocoa farming	K. Aduse-Poku (Ghana)
15.20 - 15.50	Tea (Elementary Lab)	
15.50 - 16.10	Prizes	
16.10	Closing remarks	

List of Student talks

Butterfly (Papilionoidea, Nymphalidae) fauna assemblages in cocoa ecosystem in Ghana

KWAKU ADUSE-POKU

Faculty of Renewable Natural Resources (FRNR), Kwame Nkrumah University of Science and Technology (KNUST), UPO Kumasi - Ghana Email: kadusepoku@yahoo.com / kadusepoku@bcghana.org

Assessment of ecotourism impacts on rural livelihoods: basis for exploring its potential for poverty alleviation - a case study of Kakum National Park in Ghana

YAW BOAKYE AGYEMAN

Ghana Association For The Conservation Of Nature (Gacon), P. O. BOX KS 12790, Kumasi-Ghana
Email: ghgacon@yahoo.com / hexydala@yahoo.co.uk

How does human disturbance affect breeding seabirds?

YURI ALBORES-BARAJAS

512 Graham Kerr Bd, University of Glasgow, Glasgow G12 8QQ, UK
Email: y.albores-barajas@research.gla.ac.uk

Bushmeat and alternatives in urban markets in equatorial guinea: indicators of hunting sustainability and drivers of bushmeat demand

SOPHIE ALLEBONE-WEBB

Institute of Zoology, Zoological Society of London, Regents Park, London, NW1 4RY Email: Sophie.allebhone-webb@ioz.ac.uk

What is the disappearing Cork Oak Woodlands potential for Natural Regeneration? (Preliminary Results)

ANA ALVES

Grupo de Etología y Conservación, Departament de Biologia Animal (Vertebrats), Facultat de Biologia, Universitat de Barcelona, Av. Diagonal, 645, 08028 Barcelona, Spain Email: afmalves@gmail.com

Understanding the ecology and implications of recovering degraded reef communities within no-take Marine Protected Areas

JONATHAN ANTICAMARA

Project Seahorse, Fisheries Centre Aquatic Ecosystems Research Laboratory (AERL), 2202 Main Mall, The University of British Columbia, Vancouver, BC, CANADA V6T 1Z4 Email: j.anticamara@fisheries.ubc.ca

Contribution to the bio-ecology of the Grey-necked Picathartes, Picathartes oreas

TAKU AWA II

Cameroon Biodiversity Conservation Society (CBCS), P. O. Box 3055, Messa, Yaounde, Cameroon
Email: takuatwa@yahoo.co.uk

The world's largest snake hunt: Integrating socioeconomics into conservation in Cambodia

SHARON BROOKS

School of Biological Sciences, University of East Anglia, Norwich NR4 7TJ, U.K.
Email: s.brooks@uea.ac.uk

Environmental change hastens the demise of the critically endangered riverine rabbit (*Bunolagus monticularis*).

KAI COLLINS

Mammal Research Institute, Department of Zoology and Entomology, University of Pretoria, Pretoria, 0002, South Africa Email: kaicollins@mweb.co.za

Sampling biodiversity in tropical forests: a multi-taxa cost-benefit analysis

TOBY GARDNER

School of Environmental Sciences, University of East Anglia, Norwich, NR4 7TJ
Email: t.gardner@uea.ac.uk

Wolverine, Gulo gulo, den site selection at different spatial scales in Norway

LUCREZIA GORINI

University of Rome "La Sapienza", P.le Aldo Moro 5, 00185 Rome Italy

Email: lucrezia_gorini@yahoo.it

Tiger Habitats and Integrated Conservation and Development Projects: A case study from Periyar Tiger Reserve, India.

SANJAY GUBBI

Wildlife Conservation Society-India Program, 823, 13th Cross, 7th Block West, Jayanagar, Bangalore – 560 082, India Email: gubbi@wcsindia.org

The impact of introduced black rats on Galápagos rice rats: manipulations, modelling and management

DONNA HARRIS

Wildlife Conservation Research Unit, University of Oxford, Department of Zoology, Tubney

House, Abingdon Road, Tubney, Abingdon, OX13 5QL, UK Email: donnabharris@googlemail.com

Current efforts and limitations to assessing and conserving biodiversity in selected communal conservancies of Namibia

GIFT KAMUPINGENE

Private Bag 13301, University of Namibia, Windhoek, Namibia

Email: gkamupingene@unam.na

Breeding success of the Sociable Lapwing Vanellus gregarius in central Kazakhstan and the implications for conservation management

MAXIM KOSHKIN

off.,210,40, Orbita-1, 050043, Almaty, Kazakhstan (Association for the Conservation of Biodiversity in Kazakhstan) Email: esey@mail.ru / maximkoshkin@acbk.kz

Habitat value of remnant riparian forest corridors for wildlife

ALEXANDER LEES

Centre for Ecology, Evolution and Conservation, School of Environmental Sciences, University of East Anglia, Norwich, NR4 7J, UK Email: a.lees@uea.ac.uk

One fish, two fish, red fish, but no bluefish: Conservation values of the Lord Howe Island Bluefish

MELANIE LEWIS

Department of Environmental Sciences, University of Technology, Sydney, PO Box 123, Broadway, NSW AUSTRALIA 2007 Email: Melanie.Lewis@uts.edu.au

Birds in shade coffee plantations: the factors structuring bird communities in a plantation landscape in the Western Ghats, India

ANAND MANDYAM OSURI

Nature Conservation Foundation, 307/5, IV Cross Gokalum Park, Mysore 570002, India. Email: moanand@gmail.com

The attitudes of local communities towards conservation of Kihansi Area, Tanzania

CATHERINE MASAO

Institute of Resource Assessment, University of Dar es Salaam, P.O. Box 35097, Dar es Salaam, Tanzania. Email: catherine@ira.udsm.ac.tz

Wildlife Conservation Policy in Question: How do people's attitudes towards ivory and its use relate to elephant conservation? – a case study in Japan

AKANE MINOHARA

Oxford University Centre for the Environment, Dyson Perrins Building, South Parks Road, Oxford, OX1 3QY Email: akane0523@hotmail.com

Drivers of land use change in the maasai-steppe of Tanzania: a social-political-ecology approach

FORTUNATA MSOFFE

International Livestock Research Institute (Ilri) P O Box 30709 Nairobi, 00100, Kenya. Email: fortu2_2@yahoo.com

Private parks for wildlife conservation in Zambia: New trends or no trends?

DAVID NGWENYAMA

Development Services and Initiatives Southern Africa (DSI), P.O. Box 50389, Lusaka, Zambia
Email: Chisala.Ngwenyama@zambia.co.zm / chisaladn@hotmail.com

Once bleached, twice shy: Are Caribbean corals adapting to bleaching?

ALLISON PERRY

Centre for Ecology, Evolution and Conservation, School of Biological Sciences, University of East Anglia, Norwich NR4 7TJ, UK Email: a.perry@uea.ac.uk

Social capital and network dynamics in community-based coral reef management in small islands - Taka Bonerate Marine National Park and Spermonde Archipelago, South Sulawesi

BUDIATI PRASETIAMARTATI

Coastal and Marine Resources Management Study Program, Faculty of Marine Science and Fishery, Postgraduate School, Bogor Agricultural University (IPB), Jl. Lingkar Akademik, Kampus IPB Darmaga, Bogor 16680, Indonesia Email: budiati@yahoo.com

Current status and conservation of Golden snub-nosed monkey (*Rhinopithecus roxellana*) and their social organization in Qinling Mountains, China.

XIAO GUANG QI

College of Life Science, Northwest University, No. 229. North Taibai road, Xi'an, P.R. China, 710069 Email: qixg@nwu.edu.cn / qixiaog@yahoo.com.cn

Assessing Wildlife Distribution and Population Trends in the Greater Mara Ecosystem, Kenya: the synergistic effects of landscapes and threats.

LOUISA RICHMOND-COGGAN

Durrell Institute of Conservation and Ecology, Department of Anthropology, University of Kent, Canterbury, Kent CT2 7NR, United Kingdom Email: loulourc@hotmail.com

Understanding the past, reframing the present: The importance of interdisciplinary research in understanding deforestation in western Madagascar.

IVAN SCALES

Department of Geography, University of Cambridge, Downing Place, Cambridge, CB2 3EN
Email: irs28@cam.ac.uk

Changing Rainfall patterns in Mauritius and their impact on the endemic Mauritius Kestrel

GRACE DEEPA SENAPATHI

Centre for Agri-Environmental Research, School of Agriculture, Policy & Development,
University of Reading, Reading RG6 6AR. UK Email: g.d.senapathi@rdg.ac.uk

Diminishing habitats, vanishing primates: Conservation of primates in the Upper Brahmaputra Valley, northeastern India

NARAYAN SHARMA

Ecology, Behaviour and Conservation Group, School of Natural Sciences and Engineering,
National Institute of Advanced Studies, Indian Institute of Science Campus, Bangalore 560012,
India Email: narayansharma77@yahoo.co.uk

Impacts of forest fragmentation on the genetic and assemblage structure of insectivorous bats in Malaysia

MATTHEW STRUEBIG

School of Biological & Chemical Sciences, Queen Mary University of London, London, E1 4NS,
United Kingdom. Email: m.struebig@qmul.ac.uk

Aiding the conservation of the freshwater pearl mussel by determining its habitat requirements.

LIZ TARR

Zoology Department, Tillydrone Avenue, University of Aberdeen, Aberdeen, AB24 2TZ Email:
e.c.tarr@abdn.ac.uk

Local community participation in the conservation of Colombian natural protected areas

ELIZABETH VALENZUELA

Calle 182 No 51 – 24 Casa 10 Email: ecvalenz@yahoo.com

Correlates of wildlife snaring patterns in Tsavo West National Park, Kenya

YUSSUF WATO

Kenya Wildlife Service, P.O. Box 82144, Mombasa, Kenya. Email: yussufwatol@yahoo.com

List of Student Posters

El Niño Southern Oscillation, conflict between carnivores and farmers and implications for conservation in Chile

GERARDO ACOSTA-JAMETT

Institute of Zoology, Zoological Society of London, Wellcome Building, Regent's Park, NW1 4RY, London, UK Email: gerardo.acostajamett@ioz.ac.uk

Persian Leopard in Golestan National Park

ALI AGHILI

South Mofateh Ave, Farihan Buildings, No 208, Block E, Floor3, No 6, Tehran-Iran. Postal Code: 15849 18118 Email: aagili9@yahoo.co.uk / ali.b.agili@leopardconservation.org

Consequences of hurricanes impact: the example of Cozumel Reefs, Mexico

LORENZO ALVAREZ-FILIP

Lorenzo Alvarez-Filip, School of Environmental Sciences, University of East Anglia, Norwich, NR4 7TJ, United Kingdom Email: l.alvarez@uea.ac.uk

Soil moisture gradients and biodiversity in the Cape Floristic Region, South Africa

YOSEPH ARAYA

Department of Biological Sciences, The Open University, Walton Hall, Milton Keynes, MK7 6AA, UK Email: Y.N.Araya@open.ac.uk

Monitoring ecological changes at Lake Uluabat, Turkey

ASUMAN AYDIN

Doga Dernegi, Kennedy cad. No: 50/19, Kavaklidere-Ankara, TURKEY
Email: asuman.aydin@gmail.com - asuman.aydin@dogadernegi.org

The Feeding Ecology of the Chough (*Pyrrhocorax pyrrhocorax*) in Ireland

MAEVE BOYLAN

Zoology, Ecology & Plant Science Department, University College Cork, Distillery Fields, North Mall, Cork, Ireland Email: meabhboylan@gmail.com

Land crabs as indicators of habitat quality on oceanic islands: a case study in the Indian Ocean

SARAH BROOK

School of Biological Sciences, University of East Anglia, Norwich, Norfolk, NR4 7TJ

Email: sbrooky2@hotmail.com

The current and future threats to the South African important bird areas network

BERNARD COETZEE

Department of Zoology & Entomology, University of Pretoria Pretoria, 0002 South Africa

Email: bwtcoetzee@zoology.up.ac.za

Relationships between the distribution of seabirds, commercial fisheries and MPAs

GABRIELA CRUZ-PIÑÓN

University of Sheffield. Biodiversity and Macroecology Group, Animal and Plant Sciences Department, Alfred Denny Building, Western Bank, S10 2NT Sheffield, South Yorkshire, United Kingdom Email: g.cruz@sheffield.ac.uk

Monitoring Biodiversity and Resource Use in Amazonian Protected Areas

RÔMULO FERNANDES BATISTA

Rua Recife, n 3280. Sala 208. Parque Dez de Novembro. Manaus – AM. Brazil CEP69050-030

Email: romulobio@gmail.com

The optimal design of investments in biodiversity conservation

ISLA FISHBURN

University of Sheffield, Alfred Denny Building, Department of Animal and Plant Sciences, Western Bank, Sheffield. South Yorkshire S10 2TN Email: bop05isf@sheffield.ac.uk

Reintroducing Ratty; the health and welfare implications of release into the big, bad world.

MERRYL GELLING

WildCRU, Dept. of Zoology, University of Oxford, Tubney House, Abingdon Road, Tubney, Oxon, OX13 5QL Email: merryl.gelling@zoo.ox.ac.uk

Royal Cinclodes, Ash-breasted Tit-Tyrant and the Conservation of Polylepis Forest in Bolivia

MARIA ISABEL GOMEZ

Colección Boliviana de Fauna, Casilla 6394, La Paz, BOLIVIA
Email: isabel.gomez.u@gmail.com

An investigation of ecological function in replanted, degraded and non degraded mangrove forests of Menai bay, Zanzibar.

ATAMBI GREGORY

Free University of Brussels, Department of Human Ecology, Laarbeeklaan 103, 1090 Brussels, Belgium Email: gatambi@vub.ac.be

Migratory routes and timing of arrival in Icelandic black-tailed godwits

BECCA HAYHOW

School of Biology, University of East Anglia, Norwich, NR4 7TJ Email: b.hayhow@uea.ac.uk

Land-use option biodiversity conservation - towards an integrated assessment of agriculture, forestry and conservation

KERSTIN JANTKE

University of Hamburg, Research Unit Sustainability and Global Change, Bundesstrasse 55, 20146 Hamburg, Germany Email: kerstin.jantke@zmaw.de

The ecology of the critically endangered Giant Tenebrionid Beetle (*Polposipus herculeanus*): Implications for conservation and translocation

HELEN KEEBLE

Berkshire, Buckinghamshire and Oxfordshire Wildlife Trust (BBOWT), The Lodge, 1 Armstrong Road, Littlemore, Oxford, OX4 4XT Email: hk255@hotmail.co.uk

Comparative genetic analysis of eastern imperial eagle (*Aquila heliaca*) population in the Carpathian basin

SZILVIA KOVÁCS

Szent István University Faculty of Veterinary Science Institute for Zoology, 50. Rottenbiller str., HU-1077 Budapest Hungary Email: koviszilvi@freemail.hu

Impacts of management and landscape complexity on biodiversity of winter cereal fields in Hungary

ANIKÓ KOVÁCS

Szent István University, Faculty of Veterinary, Institute for Zoology, 50. Rottenbiller , HU-1072 Budapest, Hungary Email: kovacsanko@freemail.hu

The impact of hunting and goshawk predation on black grouse populations

MIINA KOVANEN

Department of Biological and Environmental Science, PL 35 (YN340), 40014 Jyväskylä, Finland
Email: miinamk@bytl.jyu.fi

Some aspects of ecology of orchids of Chotanagpur, India

PANKAJ KUMAR

Wildlife Institute Of India, Post Box # 18chandrabani, Dehradun – 248001, Uttaranchal, India
Email: pankajsahani@rediffmail.com

Conservation assessment and planning in Gabon, Central Africa: Assessing patterns in biodiversity

MICHELLE LEE

Wildlife Conservation Research Unit, University of Oxford, Tubney House, Abingdon Road, Tubney, Oxfordshire, OX13 5QL, UK Email: *Michelle.lee@zoo.ox.ac.uk*

Distribution of seagrass and its ecological importance of Jeju Island Biosphere reserve, Korea

SUNG MI LEE

Earth and Marine Sciences, Hanyang University, 1271 Sa-1-dong, Sangnok-gu, Ansan, Kyeonggi-do, 4275-791, Republic of Korea Email: *chocoba2@gmail.com*

Farming for birds in the Amazon Basin: factors effecting species composition in the tropical countryside.

SIMON MAHOOD

School of Biological Sciences, University of East Anglia, Norwich, Norfolk, NR4 7TJ
Email: *simonmahood@yahoo.co.uk*

Species diversity of a sacred forest in a deforested area; the case of dzete mountain, northeast Zimbabwe

AURA MUKIIBI

Makerere University, Department Of Geography, Po Box 7062 Kampala Uganda
Email: *rydah@mail2queen.com*

Feeding ecology and habitat characteristics of the Congo Peafowl (*Afropavo congensis*) in the Salonga National Park and its surroundings in the DRC

EMILE MULOTWA MASUMBUKO

University of Kisangani, Faculty of Science, Department of Ecology and Management of Animal and Vegetal Resources, Laboratory LEGERA, POBox 2012 Kisangani, D R Congo Email: *emilemulotwa@yahoo.fr*

Corsac fox den use in Mongolia – implications for the conservation of a declining species

JAMES MURDOCH

Wildlife Conservation Research Unit, University of Oxford, Tubney House, Abingdon Road, Tubney, Abingdon OX13 5QL U.K. Email: james.murdoch@zoo.ox.ac.uk

Interpopulation variation of sex ratios in the Japanese pond turtles, *Mauremys japonica*

YUKI OKADA

Graduate School of Bio-Agricultural Sciences, Nagoya University, Chikusa, Aichi 464-8601, Japan
Email: yu-kijp@m2.catomics.ne.jp

Causes of community level forest conflicts and coping strategies of actors

PAUL OSEI TUTU

Geography Department, Cambridge Email: po235@cam.ac.uk

Impacts of human activities on biodiversity conservation

PHILIPS A. OYEDEJI

Vrije Universitet Brussels, Belgium Email: poyedeji@vub.ac.be

The behaviour of released captive-reared grey partridges (*Perdix perdix*) and its effect on reintroduction success

ELINA RANTANEN

Wildlife Conservation Research Unit, University of Oxford, Tubney House, Tubney, Abingdon OX13 5QL, United Kingdom Email: elina.rantanen@zoo.ox.ac.uk

Ecology and conservation of Sri Lanka Blue Magpie, *Urocissa ornata*: a restricted range species from tropical wet zone forests, Sri Lanka.

CHAMINDA PRADEEP RATNAYAKE

Field Ornithology Group of Sri Lanka, Department of Zoology, University of Colombo, Colombo-03, Sri Lanka. Email: chamipra@yahoo.com

Sound science combined with local initiative provides the key to the Trans-Rift Conservation Project in Kenya.

SAMANTHA RUSSELL

African Conservation Centre, P.O. Box 15289-00509, Nairobi, Kenya / Geography Department, University of Leicester, University Road, Leicester LE1 7RH
Email: Sr174@le.ac.uk or Samantha.russell@acc.or.ke

Modelling of potential European wetland sites for optimal land use options

CHRISTINE SCHLEUPNER

Bundesstrasse 55, 20146 Hamburg, Germany Email: christine.schleupner@zma.w.de

Relationships between species richness, human population density and environmental energy in Britain

CELIA SELEM-SALAS

University of Sheffield. BIOME, Animal and Plant Sciences Department, Alfred Denny Building, Western Bank, S10 2NT Sheffield, South Yorkshire, United Kingdom Email: c.selem-salas@shef.ac.uk

A career in conservation– what students really think about the opportunities available to them

VICKY STRAWSON AND CLAIRE STANDLEY

Oxford University Centre for the Environment, South Parks Road, Oxford, OX1 3QY Email: Victoria.strawson@worc.ox.ac.uk

A novel method for delivery a biodiversity monitoring of indicator species at national level

ABIGEL SZODORAY-PARADI

Romanian Bat Protection Association, 440014 str. Ion Budai Deleanu no.2, Satu Mare, Romania
Email: abigel@xnet.ro

Energetics of interspecific competition between african wild dogs and lions: can big carnivores co-exist inside reserves?

FLAVIE VIAL

Graham Kerr Building, University of Glasgow, G12 8QQ, Glasgow, Scotland

Email: f.vial.1@research.gla.ac.uk

Individual identification of eastern imperial eagles (*Aquila heliaca*) in the Carpathian basin

NÓRA VILI

Szent István University, Faculty of Veterinary Science, Department of Ecology, H-1077 Budapest,

Rottenbiller u. 50. Email: Vili.Nora@aotk.szie.hu

Diet and habitat selection during the early breeding season of Reeves's Pheasant (*Syrmaticus reevesii*) in central China

LIU YANG

Ministry of Education Key Laboratory for Biodiversity Sciences and Ecological Engineering,

College of Life Sciences, Beijing Normal University, Beijing 100875, China Email:

yangliubnu@gmail.com

Trophic interrelationships amongst cichlid fishes in a tropical African reservoir (Lake Chivero, Zimbabwe).

TSUNGAI ZENGEYA

University of Zimbabwe, Lake Kariba Research Station, P. O. BOX 48. Kariba., Zimbabwe

Email: zengeya@yahoo.com

Cloud forest and its importance on fog input for dams in Colombia and Ecuador

LEO ZURITA-ARTHOS

King's College London, Strand, London WC2R 2LS Email: leonardo.zurita@kcl.ac.uk

Genetic studies of Bengal tiger *Panthera tigris tigris* by non-invasive sampling

JYOTSNA BHAGAVATULA

Centre for Cellular and Molecular Biology, Uppal Road, Hyderabad 500 007. INDIA Email:
jbhagavatula@gmail.com; jojo@ccmb.res.in

Important Bird Areas of Paraguay – a baseline study for evaluating conservation challenges

JOSE LUIS CARTES YEGROS

Cnel. Rafael Franco 381, CC 1132, Asunción, Paraguay Email: *jlcartes@guyra.org.py*

Assam Haathi Project: a community-based approach to mitigating human-elephant conflict in Assam.

JOYDEEP CHAKRABARTY

EcoSystems-India, 2D Nirvana Enclave, Basisthapur By-lane No. 3, Guwahati 781028, Assam, India Email: *joydeepchakrabarty@yahoo.co.in*

Winter space use of selected large carnivores in Shamwari Game Reserve, South Africa

BOGDAN CRISTESCU

Faculty of Biological Sciences, Graduate School, Garstang Building, University of Leeds, Leeds, LS2 9JT, UK Email: *cristescub@yahoo.com*

Trees and people: local perceptions on greening Ibadan.

TINUOLA EKANADE

P.O.Box 22849, Ibadan Nigeria Email: *tekanade@yahoo.com*

Conservation opportunities and challenges for the endangered White-mantled Barbet (*Capito hypoleucus*) in the Colombian Andes

CATHERINE GAMBA-TRIMINO

School of Biological Sciences, University of East Anglia, Norwich NR4 7TJ UK
Email: *j.gamba-trimino@uea.ac.uk / cgambatrimini@gmail.com*

Evaluating Governance in Community Forest User Groups: A case study from Nepal

KALPANA GIRI

Institute of Agriculture and Forest Economics, Department of Economics and Social Sciences,
Feistmantelstrasse 4, 1180 Vienna. Austria Email: kalpana22us@yahoo.com

Conflicts in the human-elephant border: Studying the possible causes in the Bia Conservation Area in Ghana.

GONZALO GRIEBENOW

Yale University, 205 Prospect Street, New Haven CT 06511 USA.
Email: gonzalo.griebenow@aya.yale.edu

Tourism-aimed wetland restoration in China – a case study of West Lake and Xixi Wetland in Hangzhou, China

YANTING GUO

Oxford University Centre for the Environment, South Parks Road, Oxford, OX1 3QY, England.
Email: yanting.guo@linacre.ox.ac.uk

How effective are indicators based on bird populations in influencing policy and practice in Europe? (literature review)

JORDAN HRISTOV

UNEP World Conservation Monitoring Centre, 219 Huntingdon Road, Cambridge CB3 0DL, UK
Email: jordan_hristov@yahoo.com

Bat activity patterns and habitat use within agricultural landscapes

DANIELLE LINTON

Wildlife Conservation Research Unit, Oxford University, Tubney House, Tubney, OX13 5QL, UK
Email: danielle.linton@zoo.ox.ac.uk

Shocking deaths of the migrant flamingo *Phoenicopterus* in Kenya's Lake Oloidien.

LARRY LIZA

National Museums Of Kenya (Nmk), Department Of Ichthyology, P. O. Box 40658 – 00100, Nairobi, Kenya. Email: larryliza@yahoo.co.uk

How can we ensure European wetlands support diverse and resilient bird communities?

PETER LONG

Department of Biology and Biochemistry, University of Bath, Claverton Down, Bath, BA2 7AY, United Kingdom Email: p.r.long@bath.ac.uk

Utilisation of Mangrove Wood Product in Douala - Edea Reserve Cameroon Amongst Subsistence and Commercial Users

SIMON LONGONJE

Environment Department, University of York. Heslington York. YO10 5DD.UK
Email: sngomba@hotmail.com / snl102@york.ac.uk

Investigating the status of the Ethiopian wolf in the Simien Mountains.

CLARE MARSDEN

Graham Kerr Building, University of Glasgow, Glasgow, G12 8QQ
Email: c.marsden.1@research.gla.ac.uk

Youth and community volunteerism towards achievement of Environmental sustainability

JAMES MUSINGUZI

P O Box 369, Entebbe, Uganda, East Africa Email: jmusinguzi@uweczoo.org / jamesinguzi@yahoo.co.uk

Pakistan Wetlands Inventory Data Model-An approach based on Asian Wetlands Inventory, ISO 19115, and Information Model for Biological Collections guidelines.

FAISAL MUEEN QAMER

World Wide Fund for Nature – Pakistan, PO Box 5180, Ferozepur Road, Lahore 54600, Pakistan

Email: fmueen@wwf.org.pk

Dead wood of three Oak dominated forest associations in a natural forest reserve in Austria.

MD. MIZANUR RAHMAN

Institute of Silviculture, University of Natural Resources and Applied Life Sciences, Vienna and Federal Forest Office, Vienna, Austria Email: mizan.rahman@boku.ac.at

Impacts of the introduced Brown Lemurs hybrid of *Eulemur fulvus rufus* and *Eulemur collaris* on Tamarind tree *Tamarindus indica* and on the native Ringtailed Lemurs *Lemur Catta* at Berenty Reserve, South eastern Madagascar.

JOSIA RAZAFINDRAMANANA

ESSA – B.P. 175 - University of Antananarivo – Madagascar Email: r_josia@hotmail.com

Bushmeat hunting and wildlife management in the rainforest of Cameroon

RAYMOND ACHU SAMNDONG

Norwegian University of Life Science, P.O. Box 5003, N-1432 Aas, Norway

Email: rayasboy@yahoo.com

Climatic Change, Habitat Loss or mere Over-killing? What causes the extinction of Sri Lankan snakes?

RUCHIRA SOMAWEERA

Department of Zoology, Faculty of Science, University of Peradeniya, Peradeniya, Sri Lanka.

Email: ruchira_somaweera@yahoo.com

Round island, and the biology and conservation of the round island petrel

RABINDRA VANAPALLI (AKA VIKASH) TATAYAH
Mauritian Wildlife Foundation, Grannum Rd, Vacoas, Mauritius.
Email: vtatayah@mauritian-wildlife.org

Community Forestry Programme in Nepal: An opportunity for participatory biodiversity monitoring and conservation at wider scale through involving Community Forest User Groups

ISHANA THAPA
Bird Conservation Nepal, PO Box 12465, Lazimpat, Kathmandu, Nepal
Email: iamishana@hotmail.com

Vulnerability and adaptation of wetland based livelihoods in relation to climate variability and extremes in Tanzania

MADAKA TUMBO
Institute of Resource Assessment, University of Dar es Salaam, P.O.Box 35097, Dar es Salaam
Tanzania Email: madaka79@yahoo.com

Mountain Gorilla Conservation: 2003 Virunga Census results.

PROSPER LICENS UWINGELI
Rwanda office of Tourism and National Parks, Rue de la revolution 1, PO BOX 905 Kigali,
Rwanda Email: uprolic@yahoo.fr / l_uprospers@yahoo.com

Habitat use by Forest-falcons in lowland rainforest of southeast Peruvian Amazon

URSULA VALDEZ
Box 351800 Dept. of Biology University of Washington, Seattle WA 98195 USA
Email: wvaldez@u.washington.edu

Plant Monitoring Day: outdoor education and conservation action in the Cape Floristic Region, South Africa

CAITLIN VON WITT

South African National Biodiversity Institute (SANBI), Kirstenbosch Research Centre, P/Bag X7, Claremont, 7735, Cape Town, South Africa Email: vonwitt@sanbi.org

Perception of local people towards conservation: a case study on boye and extended wetlands in Jimma area, Ethiopia

HAYAL DESTA YIMER

23694 code 1000, Addis Ababa, Ethiopia Email: hayaldes@yahoo.com